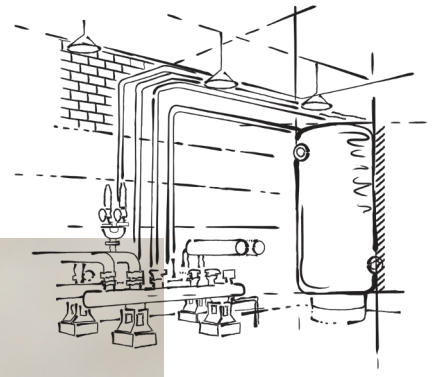


Rockboard® 40

Multipurpose Board Insulation



ROCKWOOL Rockboard® 40 is a multi-purpose stone wool insulation board used in walls, ceilings and floors for acoustic and thermal applications.

Rockboard® 40 is noncombustible and fire resistant, and will not produce toxic smoke or promote flame spread, even when exposed directly to a fire.

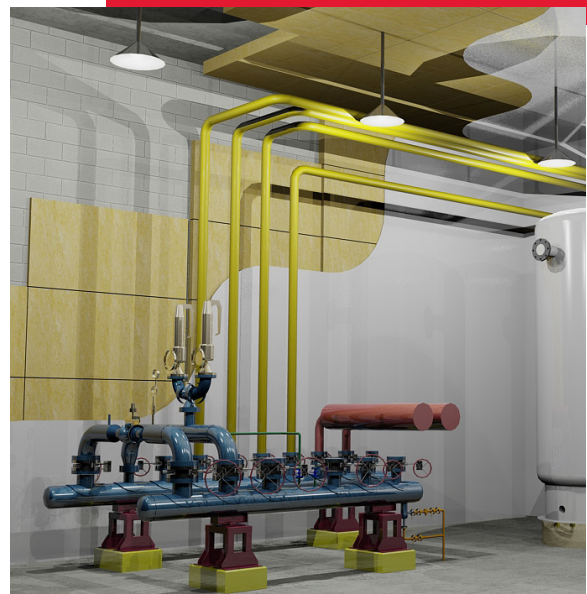
Rockboard® products also maintain dimensional integrity and, as a result, will not slump, shrink or expand with temperature.

Rockboard® products are available with a reinforced foil facing to meet a variety of application requirements. From mechanical rooms to sound studios to utility rooms, these products add a high-performance barrier to noise and fire.

Learn more at rockwool.com/rockboard

Superior Acoustic Properties

Excellent sound-dampening characteristics make Rockboard® products ideal for buffering the noise from mechanical rooms.



Rockboard® 40

Multipurpose Board Insulation

Technical Data Sheet

Board Insulation 07210* • Board Insulation 07 21 13**
Acoustic Board Insulation 09 81 13**

ROCKWOOL Rockboard® 40 is a semi-rigid, multi-purpose stone wool insulation board.

	Performance	Test Standard
Compliance	Mineral Fiber Block and Board Thermal Insulation - Type IVA Compliant	ASTM C612
Reaction to Fire	Flame Spread Index = 0; Smoke Developed Index = 0 Flame Spread Rating = 0; Smoke Developed Classification = 0 Determination of Non-combustibility of Building Materials - Non-combustible Hot Surface Performance - 1200 °F	ASTM E84 (UL 723) ¹ CAN/ULC S102 CAN/ULC S114 ASTM C411
Density	Actual Density - 4 lbs/ft ³ (64 kg/m ³)	ASTM C303
Dimensional Stability	Linear Shrinkage - <1 % @ 1200 °F	ASTM C356
Corrosion Resistance	Stress Corrosion Cracking Tendency of Austenitic Stainless Steel - Passed Corrosiveness to Steel - Passed	ASTM C795 ASTM C665
Thermal Resistance	R-Value / inch @ 75 °F RSI value / 25.4 mm @ 24 °C	4.2 hr.ft ² .F/Btu 0.74 m ² K/W ASTM C518 (C177)
Reaction to Moisture	Water Vapor Sorption - 0.03 wt%	ASTM C1104
Compressive Resistance	90 psf (4.3 kPa) @ 10 % compression	ASTM C165
Air Erosion	Maximum Air Velocity 1000 fpm (5.08 m/s)	UL 181
Thickness Dimensions	Product is available in 1" through 5" offerings (25.4 mm - 127 mm) 24" x 48" (610 mm x 1219 mm)	

	Thickness (in.)	125 Hz	250 Hz	500 Hz	1000 Hz	2000Hz	4000 Hz	NRC	SAA	
	1.0	0.09	0.23	0.68	0.94	1.06	1.04	0.75	0.72	
	1.5	0.15	0.49	1.01	1.09	1.06	1.03	0.90	0.91	
Acoustical Performance	2	0.25	0.69	1.14	1.12	1.05	1.13	1.00	1.01	ASTM C423
	3	0.63	1.01	1.24	1.10	1.07	1.16	1.10	1.12	
	4	0.93	1.10	1.16	1.11	1.08	1.18	1.10	1.14	
	5	1.09	1.25	1.24	1.13	1.11	1.09	1.20	1.19	



Issued 02-2025
Supersedes 02-2024

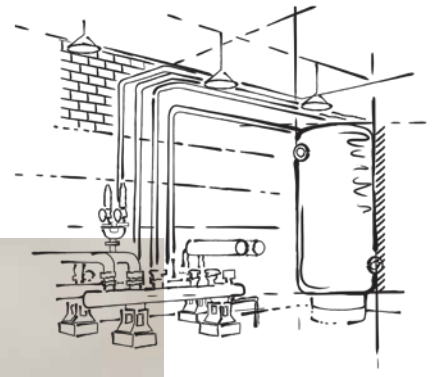
NOTE: *Master Format 1995 Edition **Master Format 2004 Edition. As ROCKWOOL has no control over installation design and workmanship, accessory materials or application conditions, ROCKWOOL does not warranty the performance or results of any installation containing ROCKWOOL's products. ROCKWOOL's overall liability and the remedies available are limited by the general terms and conditions of sale. This warranty is in lieu of all other warranties and conditions expressed or implied, including the warranties of merchantability and fitness for a particular purpose. NOTE 1: Meets Class A requirements for flame spread and smoke-developed indices as per IBC.



8024 Esquesing Line, Milton, ON L9T 6W3
Tel: 800-265-6878 • Fax: 800-991-0110
rockwool.com

ROCKBOARD® 60

Multipurpose Board Insulation



ROCKWOOL ROCKBOARD® 60 is a premium, multi-purpose stone wool insulation board used in walls, ceilings and floors for acoustic and thermal applications.

ROCKBOARD® 60 is non-combustible and fire resistant, and will not produce toxic smoke or promote flame spread, even when exposed directly to a fire. This can add an extra degree of fire resistance and contribute to occupant protection.

ROCKBOARD® products also maintain dimensional integrity under all conditions and, as a result, will not slump, shrink or expand with temperature.

ROCKBOARD® products can be surfaced with different facings to achieve optimal performance results. From mechanical rooms to sound studios to utility rooms, these products add a high-performance barrier to noise and fire.

Learn more at rockwool.com

Superior Acoustic Properties

Excellent sound-dampening characteristics make ROCKBOARD® products ideal for buffering the hum from noisy mechanical rooms.



ROCKBOARD® 60

Multipurpose Board Insulation

Technical Data Sheet

Board Insulation 07210* • Board Insulation 07 21 13**

Acoustic Board Insulation 09 81 13**

ROCKWOOL ROCKBOARD® 60 is a rigid, multi-purpose mineral wool insulation board.

	Performance								Test Standard
Compliance	Mineral Fiber Block and Board Thermal Insulation - Type IVB Compliant								ASTM C612
Reaction to Fire	Flame spread index = 0; Smoke development index = 0 Flame spread index = 0; Smoke development index = 0 Behaviour of materials at 750°C - Non Combustible Hot Surface Performance - 1200°F								ASTM E84 (UL 723) CAN/ULC S102 CAN/ULC S114 ASTM C411
Density	Actual Density - 6 lbs/ft³ (96 kg/m³)								ASTM C303
Dimensional Stability	Linear Shrinkage - <1% @ 1200°F								ASTM C356
Corrosion Resistance	Stress Corrosion Cracking Tendency of Austenitic Stainless Steel - Passed Corrosion of Steel - Passed								ASTM C795 ASTM C665
Thermal Resistance	R-Value / inch @ 75°F RSI value / 25.4 mm @ 24°C		4.3 hr.ft².F/Btu 0.75 m²K/W						ASTM C518 (C177)
Reaction to Moisture	Moisture Sorption by weight - 0.07% Determination of Fungi Resistance - Passed								ASTM C1104 ASTM C1338
Compressive Strength	355psf (17kPa) @ 10% compression 585psf (28kPa) @ 25% compression								ASTM C165
Thickness Dimensions	Product is available in 2" through 4" offerings (50.8 mm - 101.6 mm) 24" x 48" (610 mm x 1219 mm)								ASTM C423
Acoustical Performance	Thickness	125 Hz	250 Hz	500 Hz	1000 Hz	2000Hz	4000 Hz	NRC	
	2"	0.32	0.81	1.06	1.02	0.99	1.04	0.95	
	3"	0.78	0.89	1.04	0.98	1.01	1.02	1	

Issued 01-01-18
Supersedes 08-23-17

NOTE: *Master Format 1995 Edition **Master Format 2004 Edition. As ROCKWOOL has no control over installation design and workmanship, accessory materials or application conditions, ROCKWOOL does not warranty the performance or results of any installation containing ROCKWOOL's products. ROCKWOOL's overall liability and the remedies available are limited by the general terms and conditions of sale. This warranty is in lieu of all other warranties and conditions expressed or implied, including the warranties of merchantability and fitness for a particular purpose.